

# MONTHLY MEMBERSHIP PROGRESS REPORT

LOCATION INDIA

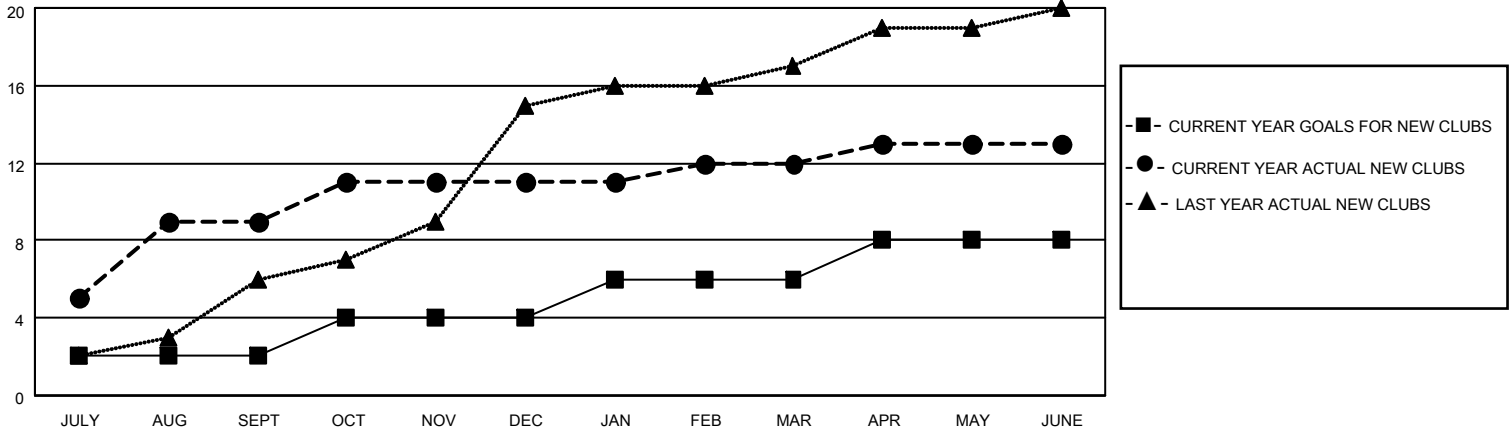
District 321 F

Results as of: 6/30/2022

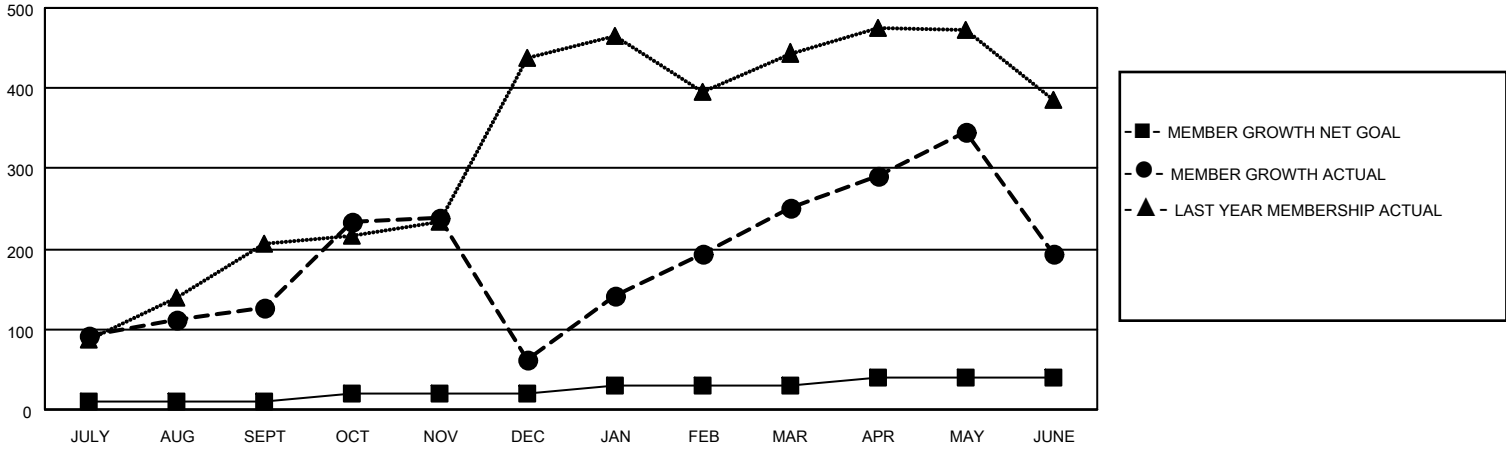
Clubs			
RESULTS FOR 2021-2022			
QUARTER	NEW CLUB GOAL	NEW CLUBS	DROPPED CLUBS
JULY/AUG/SEPT	2	9	6
OCT/NOV/DEC	2	2	8
JAN/FEB/MAR	2	1	1
APR/MAY/JUNE	2	1	5

Members			
RESULTS FOR 2021-2022			
QUARTER	MEMBER GROWTH NET GOAL	MEMBER GROWTH ACTUAL	DROPPED MEMBERS ACTUAL (including transfers)
JULY/AUG/SEPT	10	391	216
OCT/NOV/DEC	10	273	321
JAN/FEB/MAR	10	323	67
APR/MAY/JUNE	10	397	440

**GOALS AND ACTUAL NEW CLUBS CUMULATIVE**



**GOALS AND ACTUAL MEMBERS CUMULATIVE**



**DROPPED CLUBS: 19**

**115 CLUBS OF 164 ADDED 1 OR MORE NEW MEMBERS**

**GENDER DISTRIBUTION**

**DROPPED MEMBERS**

DECEASED	19
CLUB CANCELLED	290
OTHER	735
<b>TOTAL</b>	<b>1,044</b>

MALE	3,754 (84.25%)
FEMALE	700 (15.71%)
NON BINARY	0 (0.00%)
PREFER NOT TO ANSWER	2 (0.04%)

[CLICK HERE FOR CUMULATIVE MEMBERSHIP DATA](#)

TOTAL FAMILY UNIT MEMBERS	1,863
FAMILY MEMBERS PAYING HALF DUES	1,208